

Bovay Scout Ranch

Summer Adventure Camp

A property of the

Sam Houston Area Council, Boy Scouts of America

Certified by
National Camp School
Boy Scouts of America

What's Inside

BSR Web Address	4
Arrival Information	2
Contacts	4
What To Bring	3
Program Description	3
Advancements	3
Council Camp Poli-	4

Summer Adventure Camp 2008

For Cub Scouts and Webelos Scouts

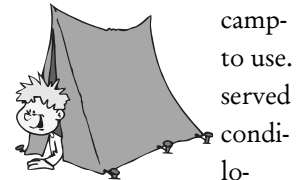
Come and experience the wonder and beauty of Central Texas' rolling hills and lakes, where Huisache and Bois-d'arc trees surround campsites and the sunsets are breathtaking. The entire 1498 acres are a natural paradise for plants and wildlife. Lake George is filled with bass, crappie, perch, and catfish.

Cub Scouts and Webelos Scouts who come to experience this parent and pal adventure camp will have their days filled with an aquatics program that includes canoeing, paddleboats, and sailing. The water park holds 93,000 gallons of water with five fountains and two water slides.

In other parts of the camp you will find field sports, a traverse climbing wall, BMX bicy-

cles, and archery and riflery for both the oldest and youngest Cub Scouts in the pack. Webelos Scouts can take part in special programs designed for the older boys in the pack. Webelos programs include pioneering projects, rocketry, and Scout skills just to name a few.

Campsites are equipped with tents on concrete platforms with sturdy metal frames, restrooms and showers, potable drinking water supply, and a lighted covered pavilion with picnic tables. Each campsite also has a fire area for packs. Hearty meals are served in the air-conditioned dining hall



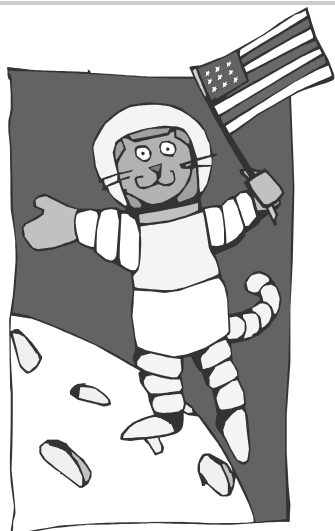
Special points of interest:

-  Adult Training Programs
-  Nature Hike
-  Trader Vic's
-  Health Services

"Space: It's What's Up There" Featured in 2008

Come help celebrate 50 years in space. Dreams of space travel and galaxies far away have always captured the imagination of young boys. This summer, your Cub Scouts cans spend three days and two nights discovering the wonders of space as well as the physical challenge of "astronaut training."

- Practice precision and accuracy skills at the Andromeda Archery range.
- Explore the Celestial Cavern and find the hidden treasure within.
- Set your sights for shooting at the Star Wars frontier fort.
- Discover Alien Games they are out of this world.
- Dig the old bones from times long ago.
- Cross the lakes of MARS by raft or Paddlewheeler.
- Climb on the mountains of the moon at traverse wall
- Transport by way BMX bike track.
- Examine moon rocks and other geologic samples.
- Get hands-on practical skills at the satellite repair station.
- Always remember Aliens are creatures



Before You Come To Summer Adventure Camp

January-April

- ☉ Complete and turn in reservation form and roster with initial payment.

May-June 10

- ☉ Adjust roster and make final payment.

2 Weeks Before

- ☉ Collect all youth and leader completed medical forms. You must turn these in upon arrival. Make sure medical forms for youth have a parent signature. Copies can be downloaded at:

www.samhoustonbsa.org

- ☉ Verify that all fees have been paid.

2 Days Before

- ☉ Recheck to see that all paperwork is properly filled out and ready to turn in.
- ☉ Confirm pack attendance.
- ☉ Collect "Food Service Form 1531 for each youth.

Day of Departure

- ☉ Inspect boy's personal gear to make sure

Special treat for Adult Leaders:
Coffee will be delivered to your campsite at 6:30 a.m. each morning!

Check-In Information

Arrive at Summer Adventure Camp at 9:00 a.m. and proceed to the Nature Center.

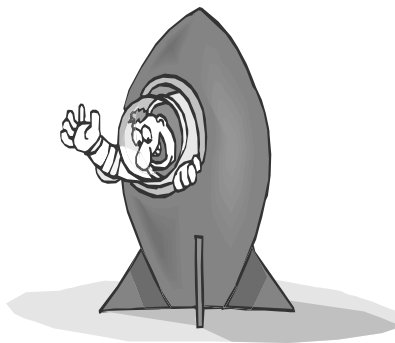
There you will be greeted and given a map, a campsite assignment and the name of your campsite host.

Proceed to your campsite and begin to unload. The campsite host will conduct the campsite orientation with the adult leader(s), collect all required paperwork

and once everyone has arrived the host will give everyone a tour of camp.

If you ordered and paid for cots, they will be in your campsite when you arrive. Additional cots can be rented, if needed. The campsite host will help you do this.

Your campsite host will have blank copies of any required forms for you to fill out if needed.



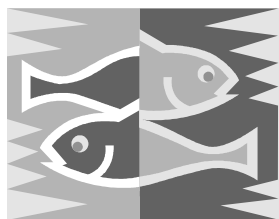
A Typical Day at Summer Adventure Camp

- 7:00 a.m. Wake-up
- 7:45 a.m. Flag ceremony and breakfast
- 9:00 a.m. Program areas open
- 12:00 p.m. Lunch
- 1:00 p.m. Indoor activities or quiet time
- 2:30 p.m. Program areas open
- 5:45 p.m. Evening flags and dinner
- 7:00 p.m. Evening programs

10:00 p.m. Lights out.

Camp leaders will be given a finalized copy of the daily schedule which will detail all events to take place.

Keep in mind that due to rain or extreme heat, schedules are subject to change at any time. Program areas will be shut down if conditions are unfavorable to the health and well being of cubs. They will be re-opened as soon as conditions permit.

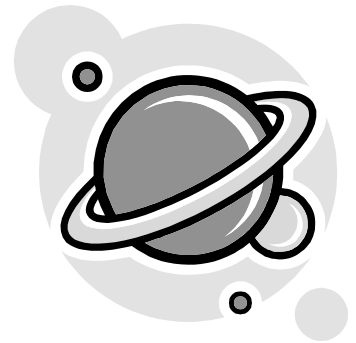


Record breaking fish located in Lake George!

Program Areas

- 🚣 **Water Park** holds 93,000 gallons of water and has five fountains and two slides.
- 🚣 **Emerson BMX Course**, expanded in 2004, is specifically designed for 6-10 year olds and is approved by the American Bicycle Association.
- 🚣 **K.S. "Bud" Adams Sports Field** features a traverse climbing wall, parachute games, 72" earth ball, a golf driving range, volley ball, soccer, and baseball fields.

- 🚣 **The Reliant Energy Nature Center** features creepy, crawly critters, plants and wildlife study, and conservation study.
- 🚣 **The SS Mary K. Fleming Paddle-wheeler** offers junior sailors the opportunity to learn knots, fish, take a raft ride to the island, and fish in the lake.
- 🚣 **Fort Blue Bell** is the location of the Cub Scout rifle range. Participants can test their skills on the pellet gun range, or try steer roping, horseshoes, and paddle-boats.
- 🚣 **The Marathon Oil Derrick** will give



Boys and adults can bring their personal bicycles to be ridden on roads and paths while wearing safety helmets.

Only camp BMX bikes will be ridden on the course.

What To Bring

This list is meant to serve as a guide. Use your discretion in choosing what to bring and what to leave. Things do get broken or lost. Please plan accordingly and leave valuable items at home.

- ☉ Sleeping bag
- ☉ Pillow
- ☉ Cot (or you can rent one here)
- ☉ Cub Scout Uniform
- ☉ Scout t-shirts
- ☉ Rain gear
- ☉ Jeans or shorts
- ☉ Extra shoes
- ☉ Extra socks and underwear
- ☉ Toothbrush and toothpaste
- ☉ Comb
- ☉ Bath soap
- ☉ Deodorant
- ☉ Sunscreen
- ☉ Large towel



- ☉ Bug repellent
- ☉ Flashlight / batteries
- ☉ Personal first aid kit
- ☉ Swimsuit
- ☉ Day pack
- ☉ Signed Class 1 Medical Form
- ☉ Summer Food Program Form
- ☉ Spending Money
- ☉ Camera / Film
- ☉ Water bottle / canteen
- ☉ A hat or cap for shade

DO NOT BRING

Pets, radios, electronic games, sheath knives, firearms, fireworks, tobacco, bows and arrows, hatchets, alcohol or illegal drugs, ammunition, scooters, skateboards or skates.

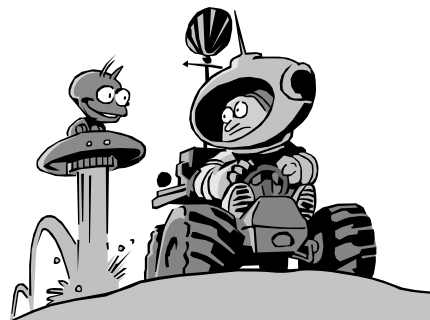


Advancements Available at Summer Adventure Camp

Advancement at Summer Adventure Camp is the same as at home. It is the responsibility of the pack and the parents to sign off on a Cub Scout's achievements

We will provide you a list of all activities that a Scout can participate in while at camp. Opportunities will vary at each camp. If he completes the requirements while at camp, you can sign his book when back at home.

Belt Loops	Pins	Webeles Activity Badges
Astronomy	Astronomy	Geologist
Chess	Geology	Naturalist
Map/Compass	Soccer	Readyman
Bicycling	Volleyball	Scientist
Fishing		Showman
Wildlife Conservation		Sportsman
Golf		
Marbles		
Soccer		
Swimming		
Ultimate		
Archery		
BB Guns		



Trader Vic's

- Trading Post is well-stocked with camp items, souvenirs and refreshments.
- Treat yourself and a friend to a Bovay Brew!
- Visa, MasterCard and American Express accepted.
- Hours of operation posted at camp.

POSTCARDS FROM CAMP

I would have never imagined all the fun the boys and I had. The staff was terrific. The facilities first rate and the food great. The sword fighting was a big hit.

Dad, Pack 505

Our Webelos had a great time at summer camp thanks to your great staff. We were impressed with the organization and enthusiasm at the camp. We will be returning next summer.

Webelos Den Leader, Pack 1453

The Webelos ranges are great. The boys loved the dinosaur on the archery range. The sword fighting was really fun and exciting. The staff was great and friendly. The AC in the dining hall was appreciated and the food there was tops. I only wish we would have started coming when they were cubs. See you next summer Pack 31.

Your facility is the best Scout camp I have ever attended. Every staff member deserves a big "Thanks" for making summer camp a great camping experience.

Parent, Pack 508

Council Camp Policies

All policies strictly enforced on all facilities

Alcohol and Drugs—It is the policy of the Boy Scouts of America that the use of alcoholic beverages and controlled substances are not permitted at encampments or activities on property owned and/or operated by the Boy Scouts of America, or at any activity involving participation of youth members.

Chemical Fuels—The use of all chemical or liquid fuels is strictly forbidden. You must provide your own wood only for campfires in campsites. Use battery-operated lanterns for lighting in tents. All pavilions have electric lighting.

Religious Beliefs and Medical Care—Medical examinations for camp attendance are required of all campers for the protection of the entire camp group. The immunization requirement is waived for persons with religious beliefs against immunizations.

Prescriptions—The taking of prescription medication is the responsibility of the individual taking the medication and / or that individual's parent or guardian. A Scout leader, after obtaining all the necessary information, can agree to accept the responsibility of making sure a Scout takes the necessary medication at the appropriate time, but



Cub Scout Camping Mission Statement

It is the mission of the Sam Houston Area Council Cub Scout Camping Program to provide Cub Scout-age boys and their parents:

1. A safe, creative, and educational place and program, fulfilling their desire for an exciting outdoor camping adventure.
2. Encouragement and motivation to stay in Cub Scouts and move forward into Boy Scouts.
3. Physical, mental, spiritual